

EzBackup-pd Quick Start Guide

For Windows



Regulatory Notices

This device complies with part 15 of the FCC Rules. Operation is subject to the following conditions:

This device may not cause harmful interference, and this device must accept any interference received, including interference that may cause undesired operation.

Pursuant to part 15.21 of the FCC Rules, any changes or modifications to this equipment not expressly approved by Data Protection Solutions may cause harmful interference and void your authority to operate this equipment. Use of a shielded data cable is required to comply with the Class B limits of part 15 of the FCC Rules. For further information, contact Data Protection Solutions.

Note

This equipment has been tested and found to comply with the limits for a Class B digital device, pursuant to part 15 of the FCC rules. These limits are designed to provide reasonable protection against harmful interference in a residential installation. This equipment generates, uses, and can radiate radio frequency energy and, if not installed and used in accordance with instructions, can cause harmful interference to radio communications. However, there is no guarantee that interference will not occur in a particular installation. If this equipment does cause harmful interference to radio or television reception, which can be determined by turning the equipment off and on, the user is encouraged to try to correct the interference by one or more of the following measures:

- Reorient or relocate the receiving antenna.
- Increase the separation between the equipment and the receiver.
- Consult the dealer or an experienced radio/TV technician for help.

Acknowledgements: EzBackup™pd is a registered trademark of Data Protection Solutions. No part of this publication may be reproduced in whole or in part, or transmitted in any form or by any means, electronic, mechanical, photocopying, recording, or otherwise, without written permission from the publisher. For information regarding permission, write to: Data Protection Solutions, 3100 North 29th Court, Hollywood, Florida 33020 USA

Text and images copyright © 2005 by Data Protection Solutions. All rights reserved. Published by Data Protection Solutions, 3100 North 29th Court, Hollywood, Florida 33020 USA

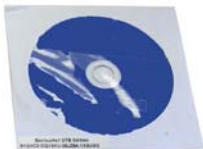
While every precaution has been taken in the preparation of this manual, we assume no responsibility for errors or omissions. Neither, is any liability assumed for damages resulting from the use of the information contained herein.

Windows® is a registered trademark of the Microsoft Corporation. NET Framework® is a registered trademark of the Microsoft Corporation. All other trademarks used in this text are registered trademarks of their respective owners.

©2007 Printed in the USA Rev. 3

Box Contents

- 1 EzBackup™pd External Drive Unit
- 1 Carry Case
- 1 USB Cable
- 1 Power Adapter
- 1 Quick Start Guide
- 1 Screw Driver
- 1 Warranty Card



Introduction

EzBackup is a complete drive to drive backup and restore solution. It is designed to protect users against data loss, whether that loss is due to a single inadvertently deleted file or the failure of an entire hard drive.

EzBackup will create a mirror image (an exact duplicate) of your computer's internal hard drive, including the operating system, applications, settings and data files, on a second drive. The destination drive can be either an internal or an external drive. After the initial image copy has been created, individual files and folders may be selected for backup.

Minimum System Requirements

- PC with an available USB 1.1/2.0 port
- 4X CD-ROM Drive
- 32MB of hard drive space
- 256 MB of RAM
- 800 x 600 Minimum Screen Resolution
- Windows® 2000/XP Home or Professional

EzBackup Quick Start Guide

This Quick Start Guide is designed to allow Windows® users to get up and running quickly. For additional information and more detailed explanations, please refer to the full manual provided on the installation CD.

- 1. Turn on your computer and boot up to Windows.** Close any applications and temporarily disable any virus protection software you may have running.
- 2. Connect the EzBackup™pd to your computer.** Connect one end of each USB cable to a USB port on the EzBackup-pd and the other end to a USB port on your computer. The unit requires both cables in order to draw enough power to operate properly. Switch on the **EzBackup™pd**.
- 3. Insert the EzBackup™ Software CD into the CD-ROM drive.** When the splash screen appears, click on **Install Now**. If the splash screen does not appear automatically, open My Computer and double click on the CD-ROM drive icon to launch installation.

Note: If a question regarding “Microsoft .NET Framework®” appears during installation, select **YES**.

4. When the installation has completed successfully, the EzBackup™ application will launch automatically. A prompt will appear asking if you wish to select your drives. Click Yes to continue.
5. EzBackup™ will now search your computer for available drives. Two drop-down lists, one labeled Source Drive and the other Destination Drive, will appear. Select your Source and Destination drives from the list and click Next.

If either drive is not listed, check that the drive is properly connected and turned on. If you have neglected to connect or power on your drive, do so now and click Refresh to update the drive lists. Click Next to continue. If you need to return to the drive selection screen at any time select Choose Drives from the File Menu.

6. Once you have selected your Source and Destination drives, the Set Up Backup Options screen will appear. Select the Default Backup option if you wish to overwrite the existing backup files with the most recent version each time you backup. Select the Incremental File Backup option if you wish to maintain multiple copies of your backups with dated restore points. Click Next to continue.

7. EzBackup™ will now ask if you wish to begin the image backup. Click Yes. EzBackup™ will restart your computer and begin to create an image backup (exact duplicate of your source drive on your destination drive. When the copy process is complete, strike any key to continue.

Your computer will restart. On restart, a message will appear offering the option to activate your EzBackup™ software. Click Yes and enter the activation code on your disk jacket. Your copy of EzBackup will only operate for 30 days if it is not activated so it is important to enter your activation code as soon as possible.

Store the EzBackup™ software CD in a safe and handy place. In the event that you must restore your entire drive to its original (and, if applicable, bootable state), a full image restore will be necessary and use of the CD will be required.

8. Before you can utilize the one-touch backup feature of the EzBackup-pd, you must set up this feature. Click on the **Schedule** tab from the EzBackup main menu and select **Create New Schedule**. Select the **Upon Event** option and choose **Button Pressed** as the event.

For additional information, please consult the full **EzBackup™** manual which is available in Acrobat format on your **EzBackup™ Software** installation and recovery CD. The EzBackup manual is also available for download from our website at: http://www.ezd2d.com/support_manuals.php.

To Install or Re-install a Drive

It is not recommended that users disassemble the EzBackup-pd. However, if it becomes necessary to add or remove a drive, unscrew the case and slide it apart as shown below.



1. Connect the drive to the IDE connector on the PCB board.

2. Slide the drive and PCB board into the aluminum case.

3. Replace the screws in the front cover and attach firmly to the body case.



Boot from the CD-ROM Drive

If it is necessary to do a complete image restore, you will need to boot from the EzBackup CD-ROM disk. If your computer is not set to boot from the CD-ROM drive you may need to change the boot sequence in the computer BIOS.

Many computers display BIOS access instructions while the computer boots. Pressing a key or a combination of keys before the Operating System begins to load will access the BIOS. In most cases you will simply press the 'del' key after the first visible text on your screen. Some other common keys are ESC, F1, F2, F10, Ctrl-Del. For more information, check the documentation that came with your computer or refer to the list below. If you are still experiencing difficulty please contact our tech support at: 954-925-2889 from 9:00 to 5:00 Eastern Standard Time.

Computer

Acer®

AST®

CTRL+ALT+DEL

Compaq® 8700

CompUSA®

Cybermax®

Dell® 400

Dell 400

Key Command(s)

F1, F2, CTRL+ALT+ESC

CTRL+ALT+ESC,

F10

DEL

ESC

F3

F1

Dell Dimension®	F2 or DEL
Dell Inspiron®	F2
Dell Latitude	Fn+F1 (while booted)
Dell Latitude	F2 (on boot)
Dell Optiplex	DEL
Dell Optiplex	F2
Dell Precision™	F2
eMachine™	DEL
Gateway® 2000 1440	F1
Gateway 2000 Solo™	F2
HP® (Hewlett-Packard)	F1, F2
IBM®	F1
IBM E-pro Laptop	F2
IBM PS/2®	CTRL+ALT+INS after
CTRL+ALT+DEL	
IBM Thinkpad® (newer)	Windows: Programs-Thinkpad
CFG	
Intel® Tangent	DEL
Micron™	F1, F2, or DEL
Packard Bell®	F1, F2, Del
Sony® VIAO	F2
Sony VIAO	F3
Tiger	DEL
Toshiba® 335 CDS	ESC
Toshiba Protege	ESC
Toshiba Satellite 205 CDS	F1
Toshiba Tecra	F1 or ESC

How to Get Help

If you should find that you need help beyond what is offered in this manual or if your **EzBackup™sa** is in need of repair or warranty service, please contact **DPS Technical Support** by using the methods below.

Phone	954 925-2889
Fax	954.925.2889
email	support@EzD2D.com
Address	3100 North 29 th Court Hollywood, Florida 33020 USA
Hours of Support	Mon. – Fri. 9AM – 5PM EST

In the unlikely event your **EzBackup™sa** is in need of repair, you will need to obtain a Return Merchandise Authorization (RMA) number before you can return the product to DPS. To obtain an RMA number, please have your product serial number handy and call DPS at the telephone number above. Ship the product back to us in its original carton or equivalent with the RMA number and your name and address on the shipping label.

Data Protection Solutions by ARCO One-Year Limited Warranty

This warranty gives you specific legal rights. You may also have other rights that vary from one jurisdiction to another. THE WARRANTIES GIVEN HEREIN, TOGETHER WITH ANY IMPLIED WARRANTIES COVERING THE HARDWARE, INCLUDING ANY WARRANTIES OF MERCHANTABILITY OR FITNESS FOR A PARTICULAR PURPOSE, ARE LIMITED IN DURATION TO THREE YEARS FROM THE DATE OF DELIVERY TO PURCHASER, WITH THE EXCEPTION OF HARD DISK DRIVES (HDD). ARCO WILL HONOR THE FIRST YEAR OF THE HDD WARRANTY PERIOD, AFTER WHICH TIME THE PURCHASER MUST CONTACT THE MANUFACTURER FOR ANY ADDITIONAL COVERAGE. THE HDD WARRANTY PERIOD BEGINS FROM THE DATE OF DELIVERY AND ARE SUBJECT TO THE SAME TERMS AND CONDITIONS AS FOLLOWS:

Data Protection Solutions by ARCO. ("DPS") warrants to the Purchaser that DPS' hardware is free from defects in workmanship or material under normal use and service. This warranty commences on the date of delivery of the hardware to the Purchaser. Any claim under the warranty must include a dated proof of purchase or invoice. In any event, DPS' liability for defective hardware is limited to repairing or replacing the hardware. During the warranty period, DPS agrees to repair or replace, at its sole option, without charge to Purchaser, any defective component part of the hardware. To obtain service, Purchaser must return the hardware to DPS or an authorized DPS distributor in an adequate container for shipping. The postage, shipping and insurance charges incurred in shipping to DPS will be paid by Purchaser and all risk for the hardware shall remain with Purchaser until such time as DPS takes receipt of the hardware. Upon receipt, DPS will promptly repair or replace the defective unit and then return said unit to Purchaser, postage, shipping, and insurance prepaid. DPS may use reconditioned or like new parts or units, at its sole option, when repairing any hardware. Repaired products shall carry the remaining warranty period pertaining to original purchase, or one (1) year whichever is greater. This warranty is contingent upon proper use of the hardware by Purchaser and does not cover: damage due to accident, unusual physical, electrical, or electromechanical stress, neglect, misuse, failure of electric power, air conditioning, humidity control, transportation, operation with media not approved by DPS, or tampering with or altering of the hardware.

DPS SHALL NOT BE LIABLE TO YOU FOR LOSS OF DATA, LOSS OF PROFITS, LOST SAVINGS, SPECIAL INCIDENTAL, CONSEQUENTIAL, INDIRECT OR OTHER SIMILAR DAMAGES ARISING FROM BREACH OF WARRANTY, BREACH OF CONTRACT, NEGLIGENCE, OR OTHER LEGAL ACTION EVEN IF DPS OR ITS AGENT HAS BEEN ADVISED OF THE POSSIBILITY OF SUCH DAMAGES, OR FOR ANY CLAIM BROUGHT AGAINST YOU BY ANOTHER PARTY.

This warranty allocates risks of product failure between Purchaser and DPS.

DPS' hardware pricing reflects this allocation of risk and limitations of liability contained in this warranty. The warranty set forth above is in lieu of all other expressed warranties, whether oral or written. The agents, employees, distributors, and dealers of DPS are not authorized to make modifications to this warranty, or additional warranties binding on DPS. Accordingly, additional statements such as dealer advertising or presentations, whether oral or written, do not constitute warranties by DPS and should not be relied upon. Returning the product to Data Protection Solutions by ARCO. Contact Technical Support to obtain a Return Merchandise Authorization (RMA) number. You must have an RMA number before returning the product to us. Ship the product back in the original container with the RMA number, name, and address on the shipping label.

Purchaser should address all matters concerning this warranty to: **Data Protection Solutions by ARCO**
3100 North 29th Court, Hollywood, Florida 33020 U.S.A.
Telephone: 954-925-2688 Facsimile: 954-925-2889 Tech Support: 954-925-7347
e-mail: info@arcoide.com